

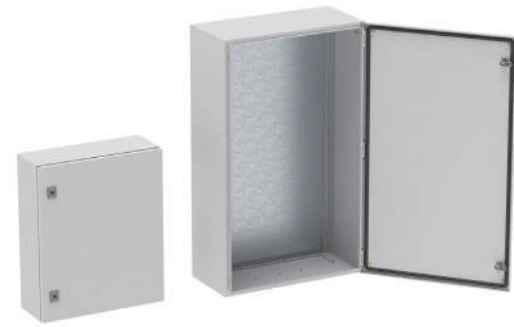


Wall and floor-mounted enclosures



Wall-mounted enclosures series ST
Wall-mounted enclosure series CE
Wall-mounted boxes series CDE
Floor-mounted enclosures series CQE

Wall-mounted enclosure series ST



ST series enclosures are designed for protection of equipment in power distribution and automation systems against aggressive environmental exposure.

Modern automated manufacturing of ST series enclosures is carried out in the Russian Federation. DKC is the first Russian company which has launched its own, fully automated manufacturing and tuned up production of high-grade and state-of-the-art enclosures that are competitive on the global market.

Total quality control and introduction of modern technologies and advanced equipment into manufacturing of ST series enclosures make it possible not only to ensure high quality level and long service life of manufactured products, but also to provide universal and unique items.

The structure of ST enclosures and their elements is made of strong and safe modern materials, thus showing high operating reliability. Technologies and equipment unique for the Russian market are applied in manufacturing along with involvement of highly qualified specialists both from Russia and European Union countries.

ST enclosure series has fully inherited all basic advantages of CE series products, such as high degree of dust and moisture protection, shock resistance, operating efficiency, seismic and vibration resistance. Moreover, it has gained additional advantages, such as mounting plate marking, minimized number of plastic elements, higher resistance to impact of environmental factors, UKhL1 climatic version according to GOST 15150 and so on.

When working with the new series of enclosures, it is possible to use the current accessories from the range of CE series enclosures. Where necessary, this allows replacing CE series enclosures by newly modified enclosures without any trouble, not losing anything for that matter.

All the stated parameters for the new ST enclosure series are confirmed by the relevant tests and reports or certificates thereof. If you wish to obtain a confirming document, please visit the Company website at www.dkc.ru or contact a regional representative of DKC.

Wall-mounted enclosure series CE



Designed for provision of reliable protection of installed equipment against external effects in power distribution and automation systems.

CE series enclosures are distinguished by operating reliability, made of high-grade sheet steel and coated with a layer of powder polyester paint having heat-resisting properties.

The enclosure has only 4 welds, thus ensuring high structural strength and reducing risks of corrosion. Cast polyurethane seal provides high degree of protection against ingress of moisture and dust within the enclosure.

The mounting plate, flange and all necessary mounting accessories are supplied complete with the enclosure for ease of assembly, whereas the rear panel has perforated holes for surface mounting that excludes the need for marking and perforation.

A standard lock with a cylinder for a key with a double bit is replaced by other types of standard locks. It is possible to install special door rails for ease of installation of equipment on the door.

CE series enclosures comply with the most stringent quality standards which is confirmed by European and Russian certificates, and are recommended for use at marine vessels and in earthquake endangered areas.

Wall-mounted boxes series CDE



Designed for connection and branching of control and power cables and wires.

CDE boxes are available in 42 different versions: with or without flanges, with box cover attachment using screws or hinges.

Boxes are made of high-quality sheet steel and coated with powder polyester paint.

The cover, flange, lock and all necessary mounting accessories are supplied complete with the box for ease of assembly, while the rear panel is equipped with pre-installed bars for installation of a DIN rail or mounting plate.

The box cover is equipped with a grounding terminal, as well as polyurethane cast seal to provide high protection degree (up to IP66).

CE series boxes comply with the most stringent quality standards which is confirmed by European and Russian certificates, and are recommended for use at marine vessels and in earthquake endangered areas.

Floor-mounted universal assembled enclosures series CQE



Designed for creation of control, monitoring or power distribution systems, as well as for arrangement of telecommunication nodes. CQE enclosures are made of high-quality sheet steel and supplied in 116 different standard sizes.

The enclosure frame, cover and panels are made of high-quality sheet steel with thickness of at least 1.5 mm, the mounting plate is made of galvanized steel with thickness of up to 3 mm and has a special U-shaped edging strip for additional stiffness.

The standard enclosure assembly has the dust and moisture protection level corresponding to IP55. This level can be raised to IP65 when using special accessories.

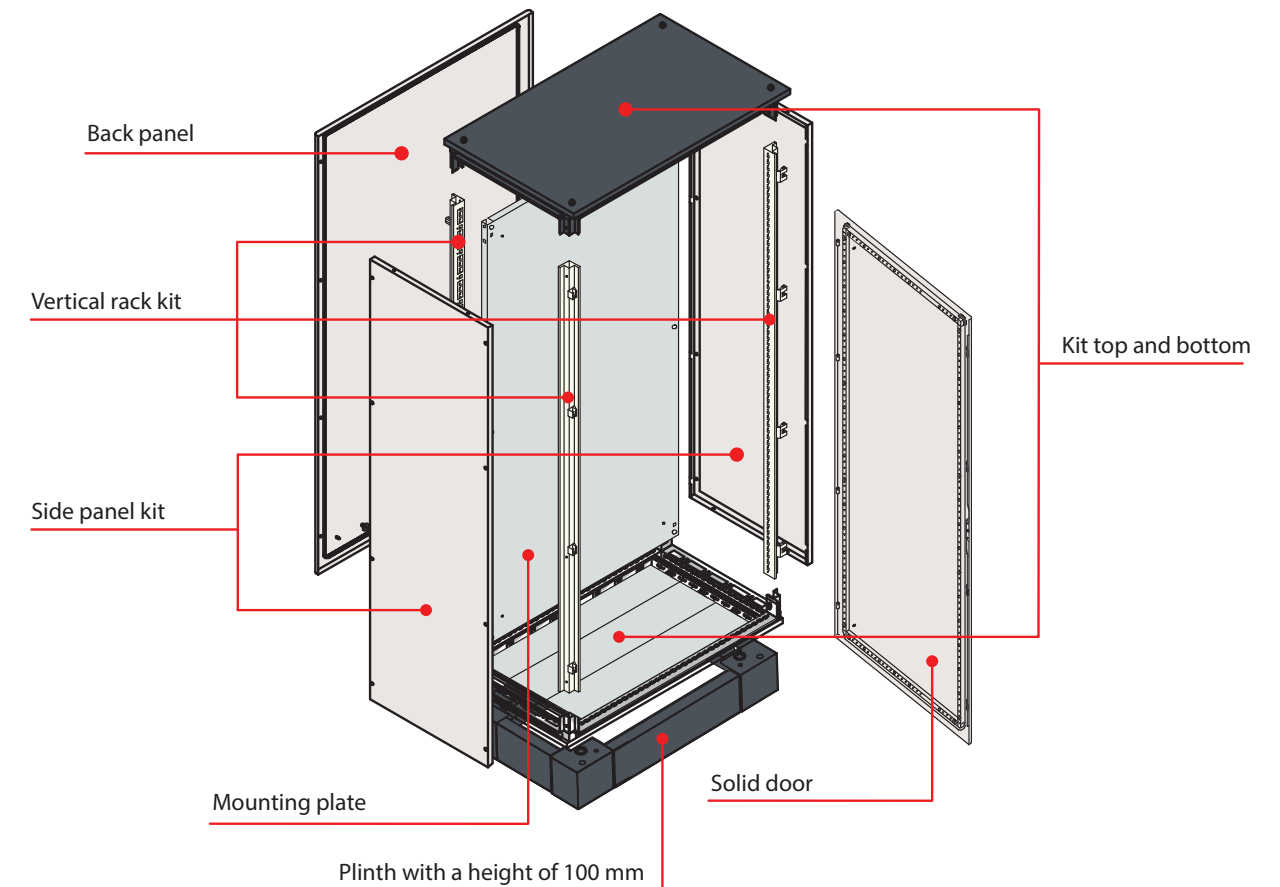
The climatic version area, wherein it is possible to use CQE enclosures without the risk to loose/impair basic enclosure characteristics, such as IP, IK, powder coating quality, seal integrity on external enclosure elements, is maximum, i.e. UKhL1 according to GOST 15150.

The enclosure profile structure has several stiffening plates which provides high strength and load bearing capacity of racks of up to 1,000 kg per enclosure assembly.

All internal mounting elements of the CQE enclosure have a universal perforation pitch of 25 mm which makes it possible to perform any modifications of the enclosure structure in a prompt and simple manner.

A wide selection of standard sizes and accessories, possibility to combine enclosures in a line, compatibility with active equipment of leading European and domestic manufacturers turn CQE enclosures into a universal solution that can meet the most stringent customers' requirements.

Scheme installation of enclosure series CQE



Basic frame elements:

- top and bottom are ordered with one code. Basic parameters for selection: enclosure width and depth;
- vertical racks are ordered with one code, four racks are included into the scope of supply. The basic parameter for rack selection is enclosure height.