



LINE **CONCHIGLIA**

**VERTICAL JUNCTION FOR
ROADSIDE ENCLOSURES** *Grafi*



RELIABLE SOLUTIONS FOR OUTDOOR INSTALLATIONS

DKC Group's Conchiglia Line provides solutions for outdoor installations and LV systems designed and manufactured entirely in Italy.

The Line includes the **Grafi series** which offers a wide and functional range of fibreglass roadside enclosures, designed to integrate perfectly with each other. This modular setup is

even more straightforward and easier to reproduce thanks to the **Conchiglia vertical junction**, a connection system designed to facilitate the height extension of enclosures.

Modular solutions for outdoor installations

The **Grafi series** is designed for the installation of electrical and electronic equipment intended for outdoor applications, in compliance with international industry regulations and high safety standards. The structure of the enclosure facilitates a flexible and tidy configuration: the system can be adapted to specific application requirements thanks to the availability of different dimensions and dedicated accessories. The lack of protruding parts in the external profile ensures precise modularity and facilitates integration even between different series.

TECHNICAL FEATURES
CONFORMITY AND APPROVALS

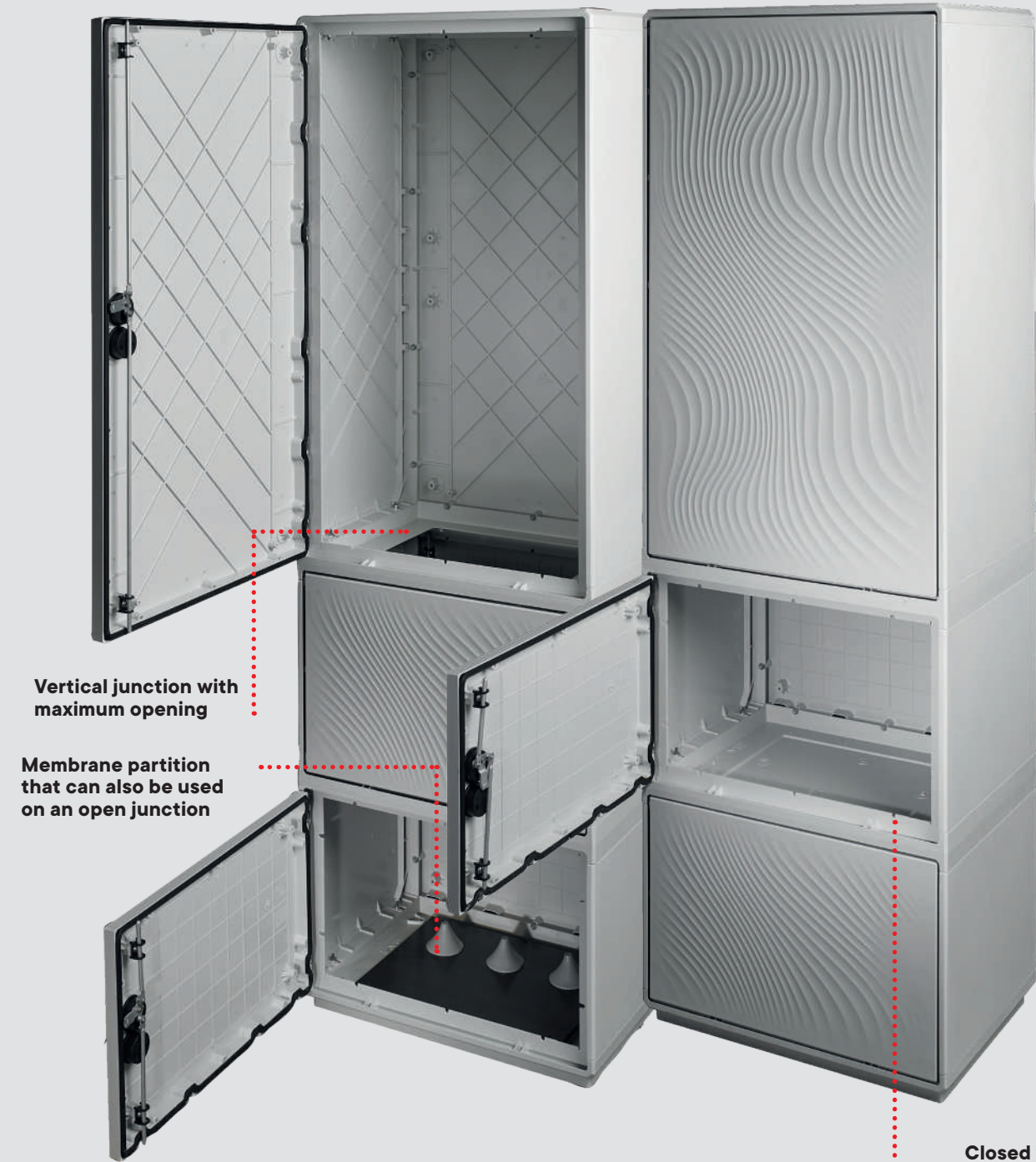
- Certifications**
IMQ according to IEC EN 62208
- Protection**
IP44 and IP55 according to IEC EN 60529
- Impact Resistance**
IK10 according to IEC EN 62262
- Configurations**
Execution with Class II equipment according to IEC 64-8/4
- Nominal insulation voltage**
Ui 690V



Vertical configuration system

Structural continuity and ease of installation

The vertical junction of Grafi enclosures ensures simplified modularity and makes them easy to repeat, replacing traditional assembly kits. The system allows for quick and tidy assembly without any field work, ensuring continuous protection and correct installation. Available for the Grafi 5, Grafi 7 and Grafi 9 series, it ensures design continuity and full compatibility within the range.

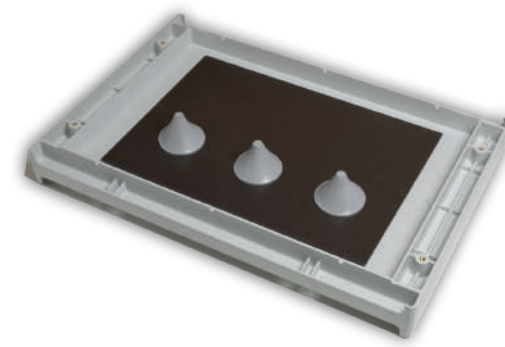
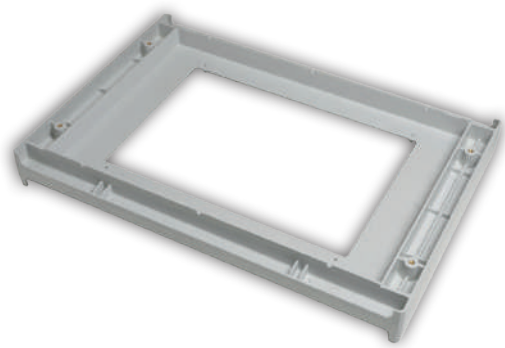


Extremely versatile: available in **three easily switchable versions**. Closed, open and open with conical membrane partition. Allows the installer to meet the requirements of **most installations**. The open junction can be completed with the closing partitions available from the catalogue.



The junction is assembled between one module and another by removing the roof of the lower module and the base of the upper module, **even on enclosures that have already been installed without additional work**. **No cutting or measurement interventions are required**, simply the application of screws and fasteners for assembly.

VERSIONS



JUNCTION WITH MAXIMUM OPENING

Useful for achieving a non-standard configuration with full access between one compartment and another.

ENCLOSURE	DEPTH	READY FOR EXECUTION		MOUNTED EXECUTION	
		ACRONYM	CODE	ACRONYM	CODE
<i>Grafi 5</i>	330	GV5/AM	095782009	G-EA/GV5/AM	097771000
	460	GVH5/AM	095782017	G-EA/GVH5/AM	097771018
<i>Grafi 7</i>	330	GV7/AM	095782066	G-EA/GV7/AM	097771067
	460	GVH7/AM	095782074	G-EA/GVH7/AM	097771075
<i>Grafi 9</i>	330	GV9/AM	095782124	G-EA/GV9/AM	097771125
	460	GVH9/AM	095782132	G-EA/GVH9/AM	097771133

CLOSED JUNCTION

Useful for assembling modules vertically, maintaining the separation of compartments. Possibility of complete opening or drilling of the fibreglass partition by the customer.

ENCLOSURE	DEPTH	READY FOR EXECUTION		MOUNTED EXECUTION	
		ACRONYM	CODE	ACRONYM	CODE
<i>Grafi 5</i>	330	GV5/C	095782025	G-EA/GV5/C	097771026
	460	GVH5/C	095782033	G-EA/GVH5/C	097771034
<i>Grafi 7</i>	330	GV7/C	095782082	G-EA/GV7/C	097771083
	460	GVH7/C	095782090	G-EA/GVH7/C	097771091
<i>Grafi 9</i>	330	GV9/C	095782140	G-EA/GV9/C	097771141
	460	GVH9/C	095782157	G-EA/GVH9/C	097771158

MAXIMUM OPENING JUNCTION AND PARTITION WITH CONICAL MEMBRANES

Useful for separating compartments, with the possibility of passing cables from one compartment to another. The Bakelite partition is complete with 3 conical membranes, max. diameter 76mm. The partition can be removed by the user to achieve maximum opening.

ENCLOSURE	DEPTH	READY FOR EXECUTION		MOUNTED EXECUTION	
		ACRONYM	CODE	ACRONYM	CODE
<i>Grafi 5</i>	330	GV5/SIM	095782041	G-EA/GV5/SIM	097771042
	460	GVH5/SIM	095782058	G-EA/GVH5/SIM	097771059
<i>Grafi 7</i>	330	GV7/SIM	095782108	G-EA/GV7/SIM	097771109
	460	GVH7/SIM	095782116	G-EA/GVH7/SIM	097771117
<i>Grafi 9</i>	330	GV9/SIM	095782165	G-EA/GV9/SIM	097771166
	460	GVH9/SIM	095782173	G-EA/GVH9/SIM	097771174



DKC Europe Srl
Conchiglia Department
Via Enrico Mattei, 22
29010 Villanova sull'Arda (PC) Italy
Tel. +39 0321 989898
info@dkceurope.eu
www.dkceurope.com