

**EX JBOX**

**Atex universal enclosures**

EDKC



NEXT TO YOU

# Resistant and versatile



DKC Europe has extended the Cosmec Line product range for electrical cable protection and safe and reliable electrical systems, with an Atex version of JBOX universal enclosures. A complete product range for installations in hazardous environments.



# EX JBOX - Atex universal junction

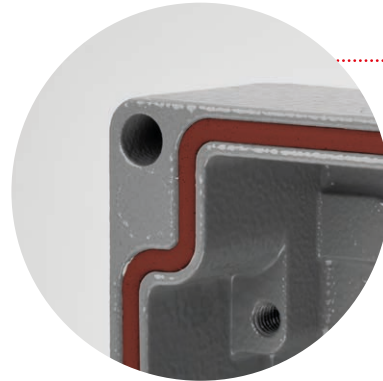
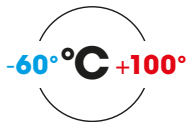
The Jbox range of increased safety enclosures has been designed and certified for installation in hazardous 1/2 and 21/22 zones and is suitable for housing distribution, signalling or power supply lines.

Specially designed mounting points on the base for DIN rails and bottom plates for mounting electronic and electromechanical components

## Specifications

- Anti-ageing materials; water, oil, grease and fuel resistant
- DIN rails or metal plates can be fitted inside the enclosures for mounting terminal blocks, switches, fuse holders, control devices, transformers, electronic circuits, connectors, etc.
- Blocks and screws for grounding both enclosure and cover

## Temperature



Silicone seals

Polyester powder coating  
RAL 7037 colour  
Special colours on request



### Rear fixing brackets

- Made of 2 mm thick AISI 316L stainless steel
- Fixing screws included

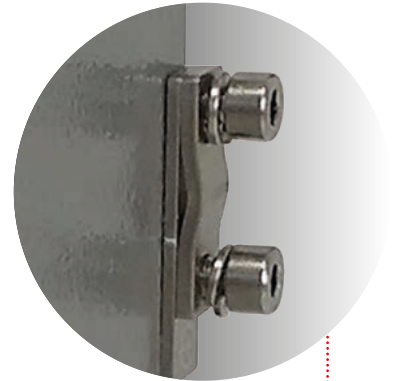


AISI 316L steel screws

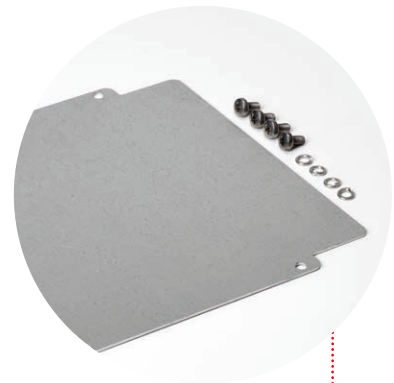


# boxes for hazardous environments

High mechanical and  
vibration resistance



Grounding

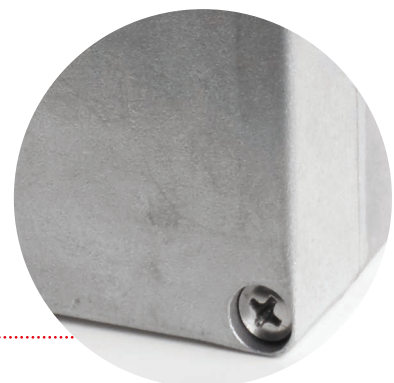


## Bottom plates

For mounting electronic/  
electromechanical components

- Made of 1.5 mm  
galvanised steel
- Fixing screws included

Body and cover in  
die-cast aluminium alloy  
EN AB 44300 (Al Si 12 )



## Markings

|                       |  |
|-----------------------|--|
| <b>II</b>             | Group II (surface)   |
| <b>2,3</b>            | Class 2,3  |
| <b>G</b>              | Suitable for explosive atmospheres presence of gas mists or vapours  |
| <b>D</b>              | Suitable for explosive atmospheres presence of combustible dust  |
| <b>Ex eb IIC</b>      | “e” protection and explosion group (gas)   |
| <b>Ex nR IIC (*)</b>  | “n” protection and explosion group (gas)   |
| <b>Gb,Gc</b>          | EPL Gb (equipment for explosive gas atmospheres with a “high” level of protection),<br>Gc (Protection level “normal”)  |
| <b>Ex tb IIIC</b>     | “t” protection and explosion group (dusts)   |
| <b>Db</b>             | EPL Db (equipment for explosive atmospheres due to the presence of combustible dust with a “high” level of protection) |
| <b>IP 66</b>          | Level of protection  |
| <b>-60°C ÷ +100°C</b> | Operating temperature range  |

(\*) The Ex nR or restricted breathing enclosure removes the fuel element of an explosion by stopping any flammable gases entering the internal enclosure. In doing so, potentially explosive gases never come into contact with hot surfaces or an ignition source potentially present inside the enclosure.

## Distinctive features

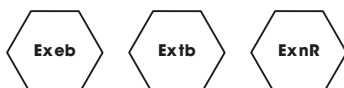
- **Stainless steel captive screws for fixing the cover**
  - corrosion resistant, ensure aesthetic appearance
  - cannot be lost during installation
- **Mounting holes**  
For mounting DIN rails and a mounting plate inside the enclosure
- **Chemical and corrosion resistance**  
Aluminium alloy enclosures with high salt spray resistance
- **High wall thickness**  
Increased resistance to mechanical impacts
- **Silicone Captive rubber seal**
  - high degree of protection (IP66) against dust and moisture;
  - does not come off during installation ensuring the stated degree of protection
- **6 sizes for one sheath**  
Selection of the most suitable size to solve any type of connection

## Certifications and conformity

### Zone



### Protection modes



II 2G Ex eb IIC Gb  
II 2D Ex tb IIIC Db IP66  
II 3G Ex nR IIC Gc



- **IECEx Standard**  
IEC 60079-0; IEC 60079-7; IEC 60079-15; IEC 60079-31
- **ATEX Standard**  
EN 60079-0; EN 60079-7; EN 60079-15; EN 60079-31
- **IECEx Certificate**  
IECEx IMQ 21.0001U
- **ATEX Certificate**  
IMQ 21 ATEX 005U; IMQ 21 ATEX 006U (Ex nR)
- **Degree of protection according to**  
**CEI EN 60529 IEC 60529 IP66**
- **Impact resistance IK10** according to EN 62262



**DKC Europe Srl - Cosmec Division**  
via E. Mattei, 22 · 29010 Villanova sull'Arda (PC) Italy  
ph. +39 0321 989898 · e-mail: [info@dkceurope.eu](mailto:info@dkceurope.eu)

[www.dkceurope.com](http://www.dkceurope.com)