

**Conchiglia**

**Locks**  
For *Grafi* line road cabinets



**New range**  
(patent pending)



[www.dkceurope.com](http://www.dkceurope.com)

# Reliable security



The new line of locks for Grafi cabinets constitutes a significant addition to the process of perfecting our offer of solutions for roadside cabinets.

## Efficiency

The result of a meticulous design process, the new line consists of patented locks in which the retractable handle door opening mechanism has been combined with the duel activation system. In the new design the sturdiness and simplicity of opening with retractable handle mechanism has remained unchanged, alongside the essential versatility of the double lock or customised lock system.

## Customisation

The expansion of the range of locks makes it possible to create a new type of compartment configuration, thanks to the variety of combinations.

Every double action lock, in fact, means that different operators can share access to an individual compartment. The variety of the line makes it possible to create specific combinations for multi-compartment solutions, adapting to an installer's every need.

## Interchangeability

The new locks are designed to also be easily fitted to existing cabinets, and so replace existing ones.

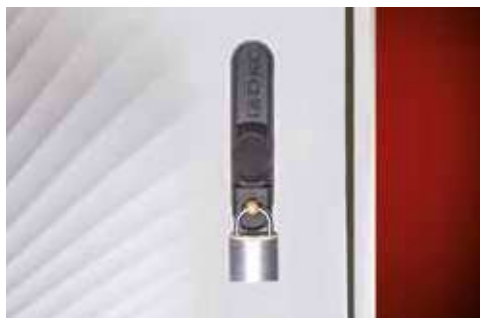
# A wide range for every insta

## Fitted locks



With triangular key

CODE	ID
<b>097770275</b>	G-EA/SSMG/TR9



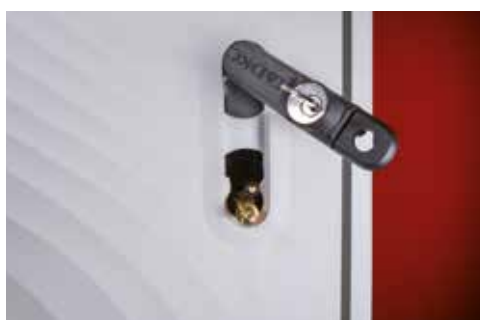
With padlockable lever

CODE	ID
<b>097770267</b>	G-EA/SSMG/L



Double action triangular key + padlockable lever

CODE	ID
<b>097770283</b>	G-EA/SSMG/TR9/L



Double action cylinder + padlockable lever

Y12 cylinder

CODE	ID
<b>097770242</b>	G-EA/SSMG/12/L

Y21 cylinder

CODE	ID
<b>097770259</b>	G-EA/SSMG/21/L

Padlockable locks are not supplied with padlocks.

# Installation need

## How to order fitted locks

The new locks can also be ordered already fitted to the cabinet. To order Grafi cabinets fitted with locks from the new range, simply make out the order in the following way (some examples):

### Cabinet with 1 compartment

Indicate the cabinet's basic code + the code of the new lock fitted:

CABINET CODE	CABINET ID
<b>077705192</b>	G7-5/22/ZT
<b>+</b>	
LOCK CODE	LOCK ID
<b>097770283</b>	G-EA/SSMG/TR9/L

a
plinth

### Cabinet with 2 compartments

Indicate the cabinet's basic code + the code of the new lock fitted and the position of the compartment on which it is to be fitted

**(a standard lock need not be specified):**

CABINET CODE	CABINET ID
<b>077705200</b>	G7-5/22/T
<b>+</b>	
LOCK CODE	LOCK ID
<b>097770242</b>	G-EA/SSMG/12/L (compartment b)

b
a

### Cabinet with 3 compartments

Indicate the cabinet's basic code + the code of the new lock fitted and the position of the compartment on which it is to be fitted

**(a standard lock need not be specified):**

CABINET CODE	CABINET ID
<b>077709319</b>	G7-9/442/T
<b>+</b>	
LOCK CODE	LOCK ID
<b>097770267</b>	G-EA/SSMG/L (compartment c)
<b>+</b>	
LOCK CODE	LOCK ID
<b>097770275</b>	G-EA/SSMG/TR9 (compartment b)

c
b
a

## Loose locks



With triangular key

CODE	ID
<b>095770277</b>	G-SSMG/TR9



With padlockable lever

CODE	ID
<b>095770269</b>	G-SSMG/L



Double action triangular key + padlockable lever

CODE	ID
<b>095770285</b>	G-SSMG/TR9/L



Double action cylinder + padlockable lever

CODE	ID
<b>095770244</b>	G-SSMG/12/L

CODE	ID
<b>095770251</b>	G-SSMG/21/L

## Grafi line roadside cabinets

The Grafi range of cabinets represents the optimum solution for creating electrical enclosure installations intended for electricity, telephone, gas and water distribution networks and traffic light systems.

The fibreglass cabinets have been designed made-to-measure to meet the customers' different needs for customisation, modularity, electrical reliability and design and ensure greater integration in both an urban public setting or a private one.

### Security

- IMQ Certification in accordance with CEI EN 62208.
- Availability, across the entire range, of system protection rating IP44 and IP55 in accordance with CEI EN 60529.
- Suitable for creating equipment in class II.

### Customisation

- Reversible door opening.
- Possibility of rearranging the partitioning of compartments, even in situ, whilst leaving the door's aperture unchanged.
- Availability of painted units for greater integration in historical urban settings.
- Wide range of accessories for specific requests and different types of lock depending on use.

### Modularity

- Possibility of compositions that extend horizontally, vertically and depth-wise.
- Availability of double-sided access to compartments.

### Functional design

- Rounded edges and handles with protective seals.
- Raised surface on the front door and on the base wall, for aesthetic purposes and increased resistance to impacts.





**DKC Europe Srl**

via Libertà, 207 · 28043 Bellinzago Novarese (NO) Italy  
tel. +39 0321 989898 · e-mail: [info@dkceurope.eu](mailto:info@dkceurope.eu)

[www.dkceurope.eu](http://www.dkceurope.eu)