

JBOX

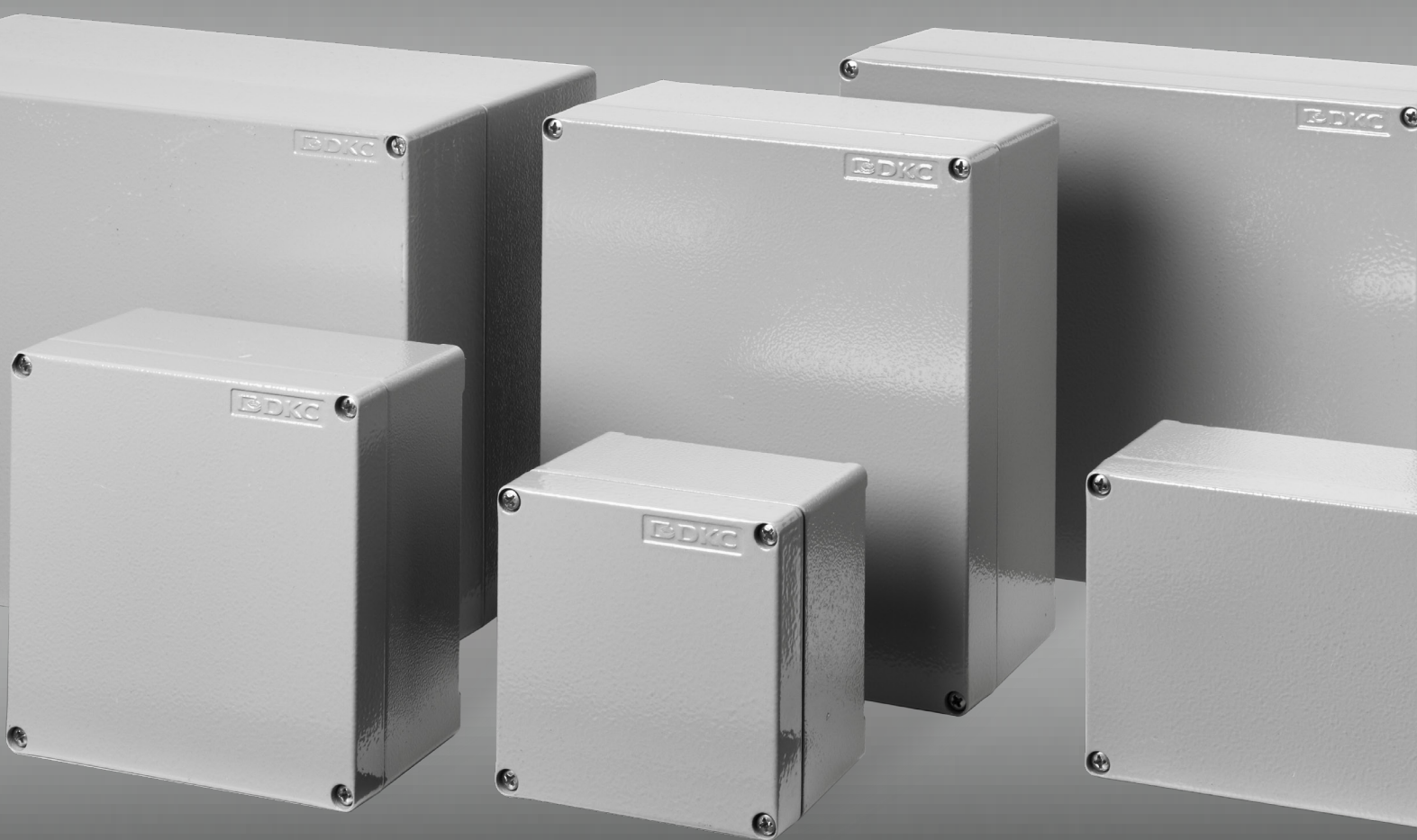
Universal junction boxes

EDDKC



NEXT TO YOU

Versatile and customisable



DKC Europe expands the Cosmec Line range dedicated to products for protecting electrical cables and making safe and reliable electrical systems, using the JBOX universal junction boxes. A comprehensive range for any type of qualitative and installation requirements, for industrial applications fitted on machines.



JBOX - Universal junction box

The junction boxes of the JBOX range are designed to protect electrical or electronic components, while their IP66 protection rating and IK10 impact resistance make them suitable for use in all industrial contexts.

The fastening points on the base can be used to equip DIN rails or mounting plates. The boxes are suitable to contain electronic and electromechanical components.



Silicon gasket

Technical features

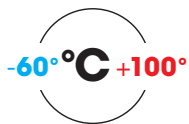
- Hi durability due to epoxy paint performance
- Din Rail or mounting plates available as accessories in order to fit mcb's transformers, mounting terminal blocks, switches, fuse holders, control devices, electronic circuits, connectors, etc. can be fitted inside the boxes.
- Earthing configuration on box and cover with studs and screws



Rear fastening feet

- Made of 2 mm thick stainless AISI 316L steel
- Fixing screws included

Temperature



Polyester powder coating with RAL 7040 finish.

Special colours on request

Certifications and conformity

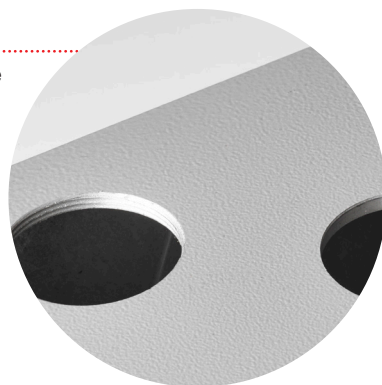
- Directive 2006/95/EC (Low Voltage) and the EN 62208 standard
- **IK10** impact resistance in conformity to EN 62262
- **IP66** protection rating in accordance with EN 60529



Stainless AISI 316L steel screws

Box for industrial applications

High-thickness walls – threadable



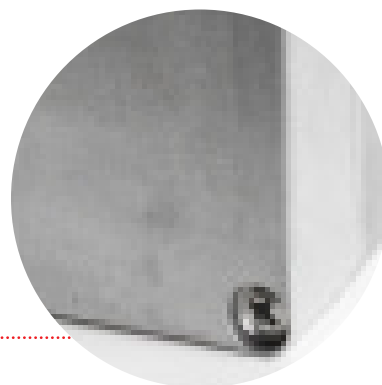
High mechanical resistance
and anti-vibration properties



Mounting plate kit

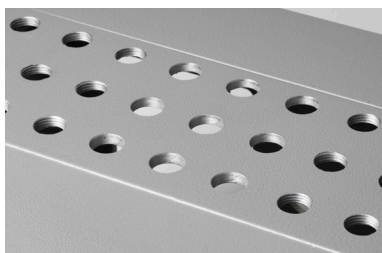
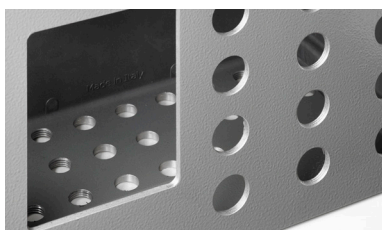
- Made of 1.5 mm-thick galvanised steel
- Fixing screws included

Die-cast aluminium alloy
body and cover
EN AB 44300 (Al Si 12)

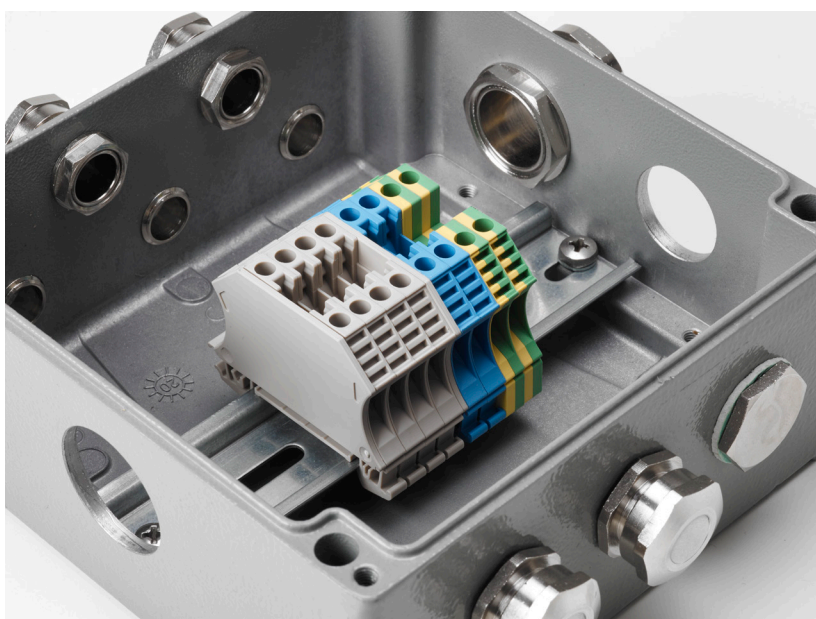


Customised holes

Versatility for every application. The level of customization on this product can be higher than every competitor due to the walls thickness of the box. Round or square hole shapes can be punched or routed. Giving space to signalling devices, metering or human interface.



Configurations and custom elements



The boxes can be equipped with fittings, cable glands and terminal blocks, specials can be made on request.

For further information on the product's versatility and on the feasibility of custom elements, please contact our sales network.



DKC Europe Srl - Divisione Cosmec

via E. Mattei, 22 · 29010 Villanova sull'Arda (PC) Italy
tel. +39 0321 989898 · e-mail: info@dkceurope.eu

www.dkceurope.com