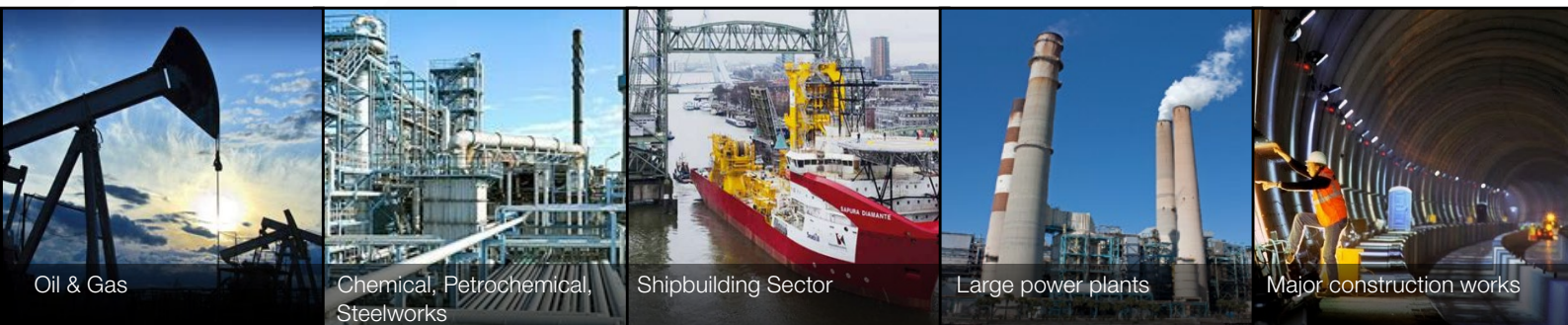




A World of Solutions



The **DKC Group** is one of the main industrial leaders for production of cable management systems and solutions for protection, transport, distribution and signalling of energy in the fields of: **Oil & Gas** (refineries, pumping stations, pipelines); **Chemical, Petrochemical, Steelworks; Shipbuilding Sector** (maritime, airport, railway); **Power plants** (solar, hydroelectric, thermoelectric, wind) and **Works for the construction** of roads, highways, tunnels, galleries, shopping centres, water and potable reserves and security systems.

The DKC group

HUNGARY

DKC Hungary Kft

Budapest
Ph. +36 74540002

ITALY

DKC Europe Srl

Ph. +39 0321 989898

Bellinzago Novarese (NO)

Novi Ligure (AL)

Villanova sull'Arda (PC)

Roma (RM)

Collegno (TO)

DKC Power Solutions srl

Ph. +39 0321 9898750

Brivio (LC)

Lograto (BS)

BRAZIL

Beghim Indústria e Comércio S.A.

São Paulo
Ph. +55 11 2942-4500

Maxtil Industria e Comercio Ltda

Recife
Ph. +55 81 3339-6653

RUSSIA

DKC Russia

Tver
Ph. +7 (4822) 777-980

Commercial office
Moscow
Ph. +7 (495) 916-5262

Branches

Voronezh
Ekaterinburg
Kazan
Krasnodar
Krasnoyarsk
Nizhny Novgorod
Novosibirsk
Perm
Rostov-on-Don
Samara
St. Petersburg
Ufa
Khabarovsk
Chelyabinsk
Cheboksary
Vladivostok
Tula
Tyumen
Saratov
Archangelsk
Irkutsk
Volgograd

ROMANIA

DKC Romania

Jud. Arad
Ph. +40 257278187

MIDDLE EAST

DKC Middle East

Ph. +966 547832604
+7 915 385 39 65
+39 0321 98 98 944
+39 0321 98 98 706

CHINA

DKC Kitai

Shanghai
Ph. +39 0321 98 98 944
+39 0321 98 98 706

UKRAINE

DKC Ukraine

Kiev
Ph. +380 (044) 496-18-45

TUNISIA

DKC Maghreb sarl

Tunis
Ph. +216 71409778

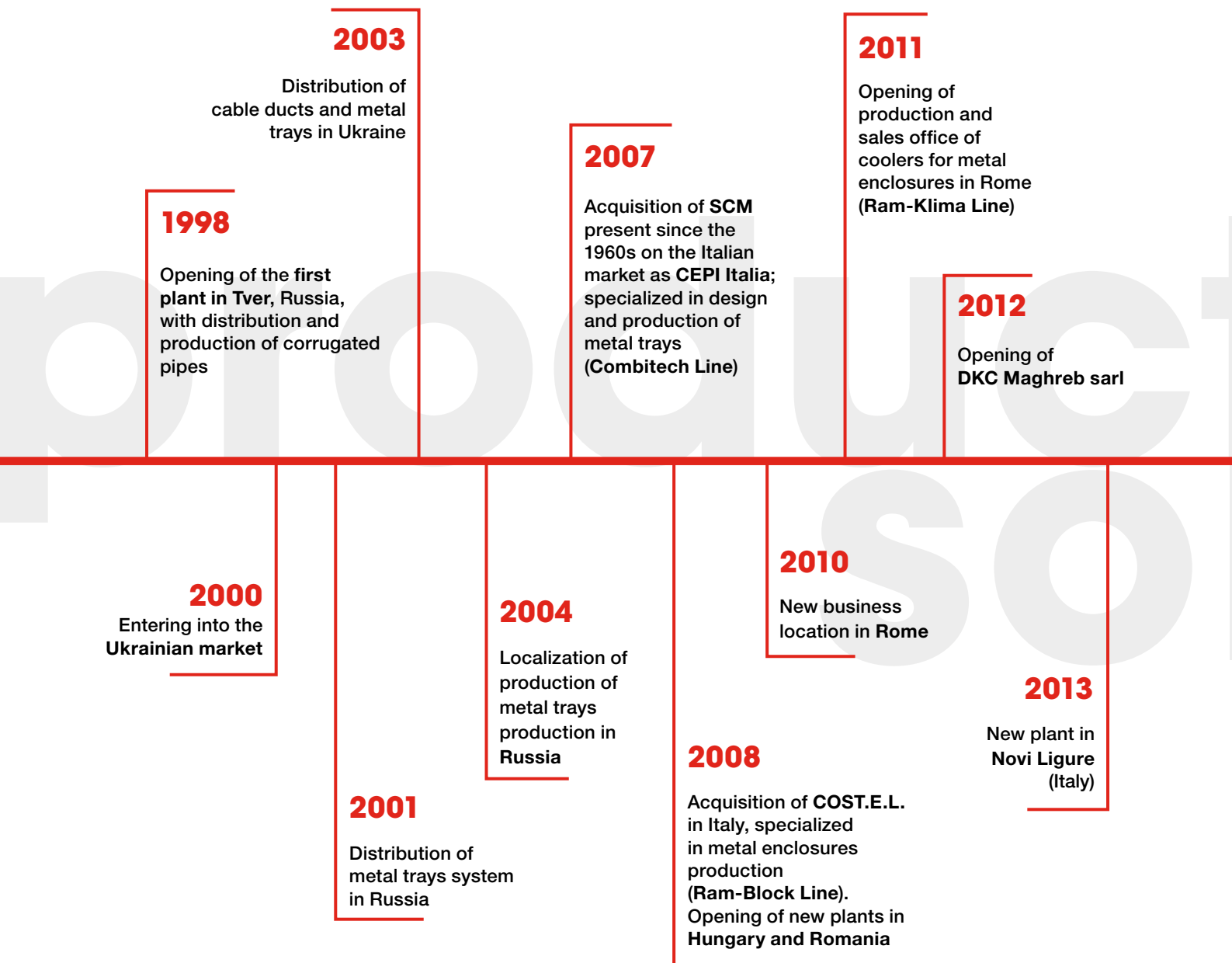
Company History

Since 1998 the **DKC Group** has been a solid and efficient reality in designing, production and marketing of cable management systems. The will of growth and the market evolution have led the DKC Group, since 2007, to purchase solid and important companies. In just a few years, DKC has structured an organisation of qualified and motivated resources to conquer the highly competitive international market in order to become a leader of the future.

At the same time, it has broadened its line of products with innovative and reliable solutions, reinforcing its role in the field of cable protection, distribution and accumulation of energy.

The combination of factors which have led to the quick growth of the DKC Group at an international level are summarised as:

- **wide availability of technologically innovative, functional and reliable products**
- **collaboration between resources, creation of a dynamic and cohesive close-knit group**
- **effective logistics and efficient pre and post sales assistance service**



The group main value is to provide valid solutions to forestall and satisfy its customers' needs.

2014

The following became part of the group:

- **Cosmec**, leading company for production of systems of metal pipes and flexible conduits for cable protection
- **Conchiglia**, historical company operating in the market of components for public lighting, low voltage electrical distribution, components for gas/water networks and road signalling equipment;
- **Enerconv**, company specialising in designing and production of machines for power electronics

Opening in Brescia (Italy) of the new production of **Hercules Line**

2016

The organizational and commercial structures of the **Hercules** brand (busbar systems) and **Steeltecnica** had been integrated into **DKC Power Solutions**

Opening of the **automatic warehouse** in Tver (Russia)

2017

Implementation of the product range with **resin, oil and special transformers**

2019

Controlling shareholding acquisition of the Italian company **RGM**, specialized in design and production of systems for power controlling, conversion and energy storage for a wide range of application in transport, industrial and medical sectors.

2015

Acquisition of the Italian company **Steeltecnica**, with more than 40 years of experience in manufacturing of enclosures for electrical cabinets/switchboards for the national and international markets

Opening **DKC Brasil** with the acquisition of:

- Beghim Indústria and Comércio S.A
- Maxtil Industria and Comercio Ltda

2018

Insertion in the DKC range of:

- products for the organisation of Structured Cabling
- 19" Rack system enclosure with cooling system for data management (**Net One line**)
- new solution of Motor Control Center (**MCC**) and systems of cable protection designed for currents up to 1600A

Strategy

Vision

To work alongside our customers, working in order to ensure constant, innovative and secure service and supporting them in designing and producing effective, reliable and quality solutions.

Economic intent

The Group aims to optimise its profits and to create a positive impact on the environment, and on different cultures and customs.

Values

Legality

In carrying out its activities, DKC respects all the regulations in force within the territories in which it operates.

Honesty and Fairness

Relations with stakeholders and suppliers are based on criteria of fairness, collaboration, loyalty and mutual respect.

Development and respect for resources

DKC protects and promotes the value of human resources, contributing to enhance the skill set of each employee and encouraging "Team Work" and synergies.

It is committed to promoting respect for the physical, moral and cultural integrity of the person, guaranteeing the dignity of each individual and safe, peaceful and serene working environments.

Customer care and satisfaction

All the activities undertaken by the DKC group are oriented towards customer satisfaction, aiming to achieve optimal levels of quality, with a view to offering an ever-better service.

Responsibility towards the community

DKC operates with the taking into account of the needs of the surrounding community and contributes to its economic, environmental, social, cultural and civil development.

Transparency

DKC undertakes to inform all stakeholders, in a clear and transparent manner, of its situation and its economic and management performance, without favouring the interests of any group or single individual.

Mission

The DKC group operates in partnership with its own clients guaranteeing the safe, reliable and careful selection of the best raw materials.

The products are the fruit of extensive studies, and innovative, technological and functional ideas aimed at responding to the needs of the clients, of the market and of the environment.

Every construction detail is subjected to rigorous testing in laboratories present on all of the group's sites and are made to comply with the safety standards required by national and international laws in force (**product certifications**). DKC works to offer personalised and innovative solutions.

The "Main Target" is **the satisfaction of customer needs**.

Objectives

To extend the presence of the Group on the international stage and to consolidate its central role on the national market.

To promote advanced support products and tools, in order to respond to the most recent needs of the market.

Strategy

To sustain and strengthen the traditional Distribution channel through wholesalers and retailers; to establish loyal partnerships with installers and designers by supporting them in their choice of products in relation to their respective needs; to invest in the new professional market of large clients, of major projects and of infrastructure works.

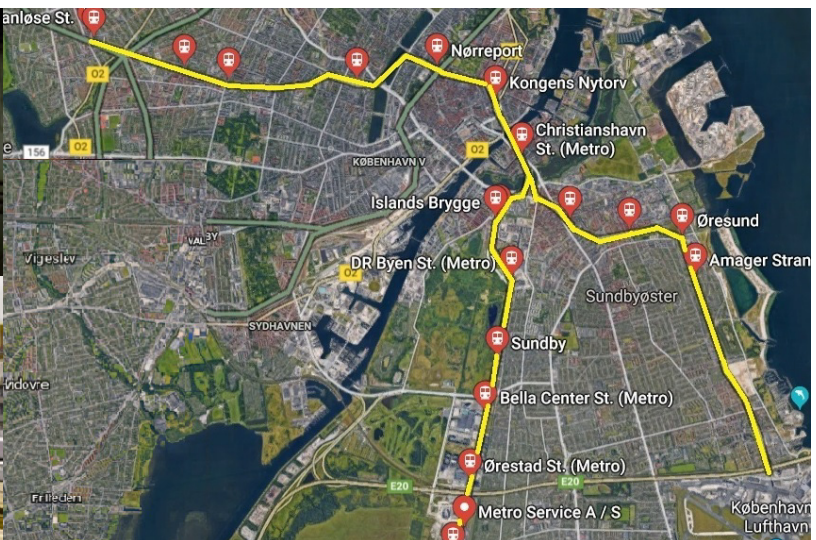


A unique brand in the world market able to meet needs and requirements through local subsidiaries or either with the DKC Group support

Omsk Refinery - Gazprom Neft 2015



Copenhagen Cityringen Metro 2017/2018



Services

Service

The **DKC Group** sets itself apart by offering a wide range of services to support its client:

- Staff who are ready to respond to any requests of engineering **assistance**;
- Organised production departments to create **personalised projects and products**;
- State-of-the-art **logistics service** supporting the extensive commercial network, developed on a worldwide scale.

Competitiveness

- **Quality, reliability and safety** of the products through certificates recognised at both a national and international level. Controls of the components and production processes by internal and external laboratories.

The quality of the products is guaranteed by a certified Company Quality System;

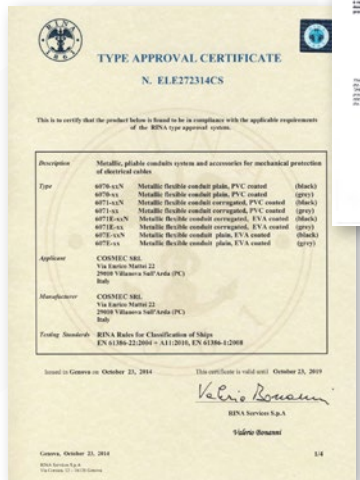
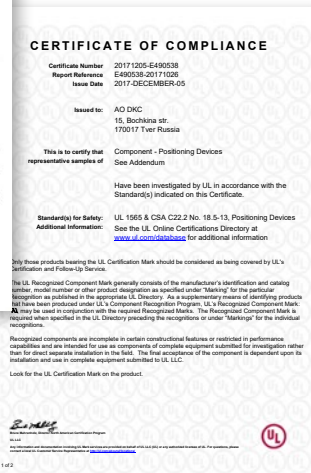
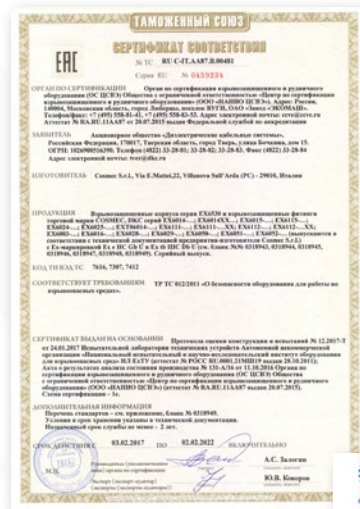
- The **continuous search** for new materials and the strong technological **Know How** strengthened by key experience, clearly demonstrate the vocation of DKC to design innovative solutions to satisfy the needs of clients.

Quality and certification

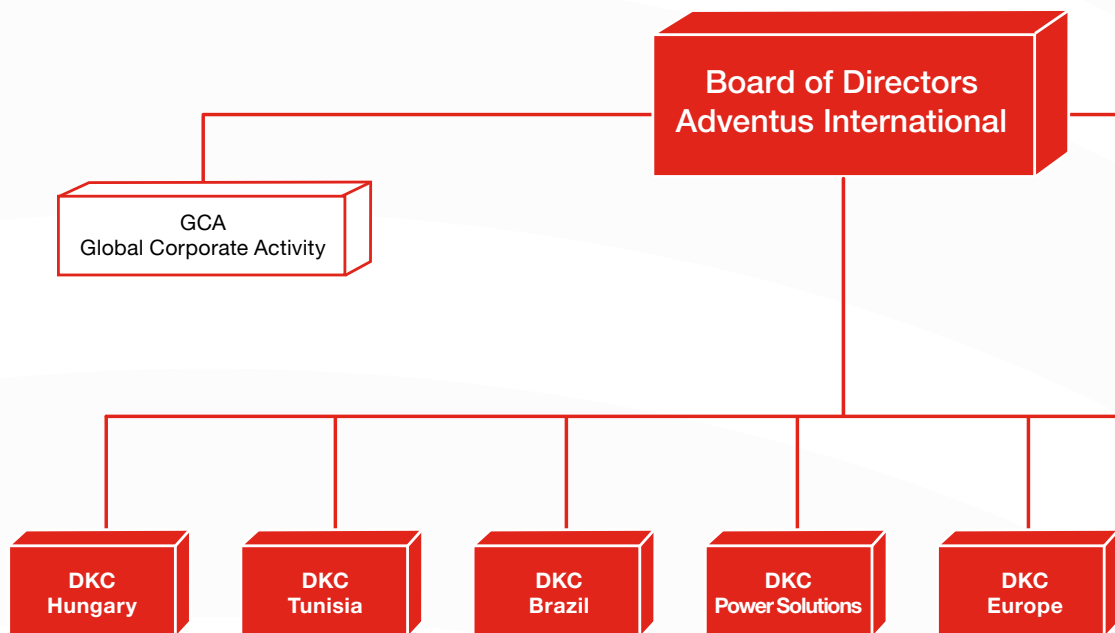
All of the supply chain, from the raw material to the final product, is developed with respect to the safety regulations set out by national and international laws. **Processes and products are certified by the main national and international certification bodies. All requirements of certifications are checked in each production plant by our internal laboratories.** A constant and daily effort is made to guarantee the safety and reliability of services and products offered.

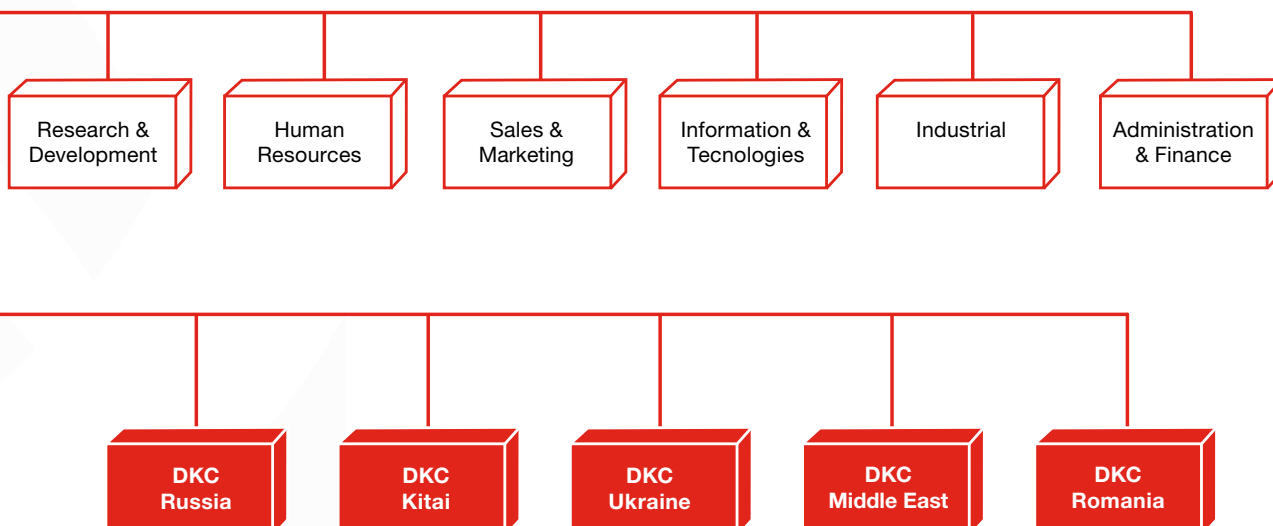


Certification



Company's structure





The figures

Employees
3.700

Production plants:
165,000 square metres

Warehouses:
86,000 square metres

Consolidated turnover 2019:
USD 402 million



Products

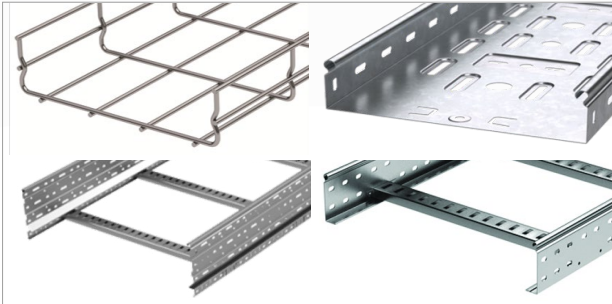
COMBITECH

Metal trays and accessories for cable management

- metal trays
- wire mesh trays
- ladder trays
- suspension systems

Applications

Industrial installations, malls and warehouses, sporting installations, roads and motorways, marine environment, civil engineering, data centre, agri-food companies, electrical network, telecommunications equipment and control systems, air-conditioning systems.



Available materials:

Trays and ladder systems

Sendzimir galvanized steel, hot-dip galvanized steel for immersion after processing, ZL galvanized steel (Magnelis/Aluminum and magnesium), painted steel with epoxypolyester resins, electric blue or grey RAL 7035, stainless steel AISI 304/316/316L.

Wire mesh tray system

Electro-galvanized steel, hot-dip galvanized steel for immersion after processing, stainless steel: AISI 304/316/316L.



Modular cable racks

Cable racks with bolting of elements for transmission of power from substations and switchgears to consuming plants and equipment, as well as for transmission of power between individual production sites. All bearing elements of modular racks are supplied in hot dip galvanized version, thus ensuring long service life of a structure and reducing expenses for route maintenance.

The main advantages of the system are high strength, manufacturability, compactness, light weight and corrosion resistance.



Solutions for the outdoor installation of electrical devices.

- **Fiberglass road enclosures:** for electrical, telecommunication and gas/water distribution networks. For traffic light systems and management systems intended for outdoor use
- **Products for industrial installation and low voltage cabinets:** solutions to distribute and control energy safely with products that guarantee the insulation of internal equipment and protection from impacts and atmospheric agents
- **Gas/Water:** boxes and terminal blocks to control and protect water and gas pipelines with anticorrosion devices. Counter for housing meters
- **Signage and Safety:** solutions to improve the safety of mobility in conditions of poor visibility and in dangerous situations thanks to road and motorway signalling equipment, safety signalling equipment in tunnels and assistance signalling equipment in the event of poor visibility
- **Public lighting:** solutions for simple, quick and safe junction with terminal box sets and slot doors



Systems of metal pipes and flexible conduits for cable protection

Harsh environments with risks of impact, fire, vandalism acts, explosions:

- metal systems of protection
- plastic systems
- ATEX/IECEx and EAC/EX certified products for the protection of cables in potentially explosive environments
- hydraulic and manual tools

Applications

Railways, marine, energy production, infrastructures and tunnels, industrial edge machine, food - chemical pharmaceutical, tertiary-highly crowded areas, refineries, plants and gas distribution centres, print shops, paper and textile industries, water treatment plants, mines, power plants.



Products

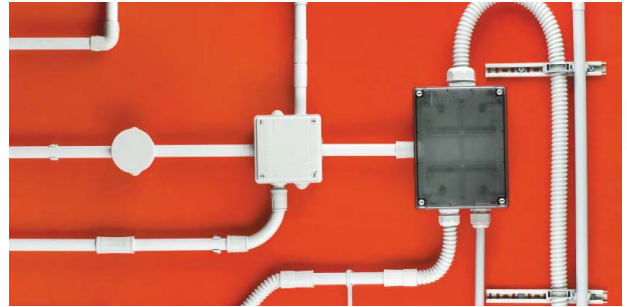


System of rigid and flexible plastic tubes for wiring

System designed for open wiring consisting of rigid and flexible plastic pipes, junction boxes, connection and fastening accessories, as well as casings for surface-mounted wiring accessories.

This group of products includes polyamide, polypropylene, polyvinylchloride and polyethylene pipes, as well as rigid and flexible reinforced pipes.

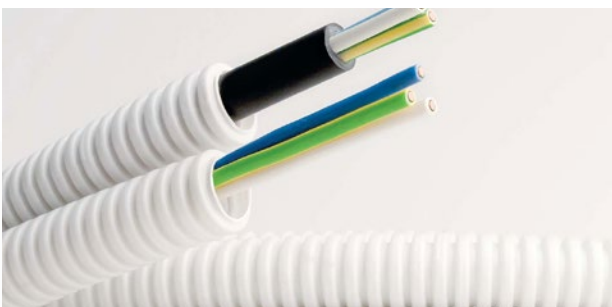
Being highly wearproof, DKC pipes are distinguished by resistance to impact and vibration loads, ultraviolet light, aggressive exposure to oils, solvents and different fuel types, and serve for cable protection under the most severe operating conditions.



System of flexible corrugated plastic tubes for wiring

System of flexible corrugated pipes, used for cable laying in the construction and reconstruction of residential, industrial and public buildings. The pipes are designed for electrical, telephone, computer, television networks, made of insulated wires, cords and cables. The corrugated pipes are wearproof, the system includes **pipes** and **double-wall pipes** made of polyamide, polypropylene, polyvinyl chloride (PVC) and polyethylene (HDPE).

DKC pipes are distinguished by high resistance. The system of double-wall pipes is designed to protect power cables, ICT lines (including fiber-optic) from mechanical damage and aggressive environmental influences.

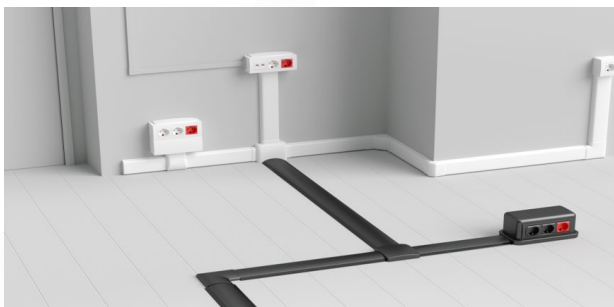


In-Liner

System for organization of working spaces

Plastic ducts, aluminum cable ducts and columns are designed for open wiring in premises of residential and commercial property. When combined with a wide range of fastening elements, connecting and branching accessories, they provide a complete solution for arrangement of a "working space" of any purpose.

- **In-Liner Classic:** system of open wiring consisting of plastic cable ducts, connection and junction boxes, fasteners and accessories
- **In-Liner Aero:** system of aluminum cable ducts and columns (service racks) for open wiring in rooms



JUPITER

Lightning protection and grounding system

The system represents a complete solution designed for the lightning protection of buildings, ground loops and potential equalization, and comprises lightning protection equipment with rods and masts, conductors, conductor holders, various connecting elements, grounding equipment and accessories to simplify system installation.

This system allows you to easily attach the conductors to almost any surfaces. To prevent corrosion, conductors have a **hot-dip galvanized coating**, guaranteeing a long service life.



Products



Standard and customized solutions for power distribution

- **Norma 20** switchboard:
wall boxes for power distribution up to 250A
- **Norma 30-40** switchboard:
floor cabinets for power distribution up to 1600A
- **Norma 50** switchboard: construction system for
power distribution up to 6300A
- **Customized switchboard**
designed and engineered on customers specification

Applications

Industrial plants, steel mills, cement works, desalination plants, Oil & Gas, production, infrastructure and utilities



Ready-made solutions for power distribution of up to 6300A

The system is designed for an easy assembly of distribution switchboard with rated current up to 6300A and with segregation kits up to form 4b.

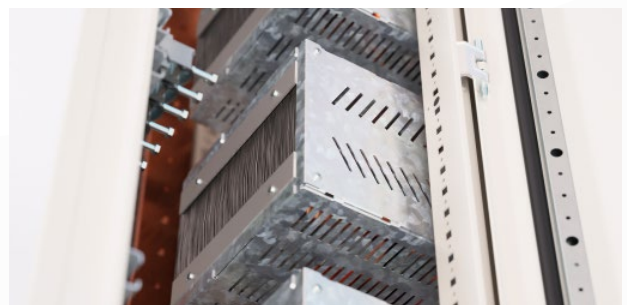
Ram-Power can produce a switchboard for any type of power distribution system:

- Second distribution from 1600 to 3200A - Application for small companies, buildings, offices, laboratories, healthcare centres, hotels, supermarkets, malls, etc
- Power distribution up to 6300A - PCC application for oil & gas, chemicals industries, marine, mining, minerals, metals industries, water & wastewater industry, data centers, commercial buildings

The Ram-Power structure modularity allows you to easily upgrade by changing or adding functional blocks.

Protection degree up to IP54

Rated voltage up to 690V





Motor Control Center for rated current up to 1600A

This unique solution on the basis of drawout units is used as part of low-voltage systems for reliable power supply and engine control with power of up to 250kW. This system, fully compatible with the Ram-Power solution, conforms to high safety and operation requirements for oil & gas, chemicals industries, marine, mining, minerals, metals industries, water & wastewater

industry, data centers, commercial buildings.

The motor control systems have been designed to meet the latest requirements in the field of feeding, control and protection of electric motors.

Protection degree up to IP54

Rated voltage up to 690V



Busbar systems for power distribution

- **Lightech busbar:**

Used in power distribution with nominal currents between 25 and 40A and nominal operating voltages up to 400V. For lighting in the industrial, tertiary and public sectors such as supermarkets, shopping centres, production areas and garages

- **Distritech busbar:**

Available for nominal currents of between 160A and 630A with aluminium conductors; for nominal currents between 250A and 800A with copper conductors. Suitable for the industrial, commercial and services sector

- **Powertech busbar:**

Available for nominal operating currents between 630A and 5000A with aluminium conductors; for nominal currents between 800A and 6300A with copper conductors.

Suitable for connections to electrical panels of transformers and generators. Used for industrial, commercial and residential structures



Products

Power transformer

Products for applications concerning the electrical energy distribution

The product range includes:

- **three-phase transformers for natural oil cooling for distribution** with insulation class up to 52kV
- **three-phase cast resin distribution transformers** with a maximum voltage not exceeding 36kV and special transformers on specific customer request

All designed and manufactured according to the STANDARD and equipped with accessories and mechanical devices.

The transformers are designed and made in line with the following regulations:

- CEI EN 60076-11: 2006
(EN 60076- 11: 2004 – IEC 60076-11: 2004)
- CEI EN 50588-1: 2016 (EN 50588-1: 2015)
- EU 548/2014



Energy storage and conversion

- **Uninterruptible power supplies - UPS**
- **Voltage/frequency converters**
- **Stabilizers**

UPS Complete range (0-250kW) single-phase and three-phase, equipped with the latest technology for satisfying all the main areas of application: industrial, information technology, electromedical and infrastructure.

The UPSs of Ram-Batt line installed between the electric distribution networks and the user equipment ensure a perfect and continuous sinewave power supply, with a full synchronization between mains and inverter and a zero time switch to batteries in case of blackout.



Solutions for industrial automation and low-voltage power distribution

For modular and compact enclosures, metal boxes (painted and stainless steel), EMC applications, suspension arm systems, customized and special products on specific customer request, consoles for remote monitoring and control systems.

Applications

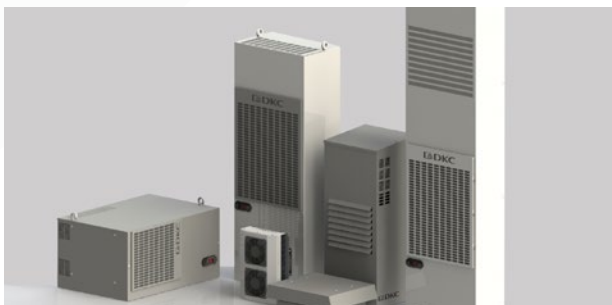
Ideal as control panels for industrial plants, suitable for all applications in electronics and low voltage distribution.



Cooling solutions for electrical cabinets

- **wall-mounted coolers:** ideal cooling solutions for all those applications where it is mandatory to manage the internal cabinet temperature
- **roof coolers:** ideal solution for cooling of cabinets in a row and in case of very limited side space

- **ventilation systems (fans and filters):** It represents the best solution when the environmental temperature allow to keep a good cooling inside the cabinet
- **Slim coolers:** to meet the needs of less protrusions and save space on cabinet sides



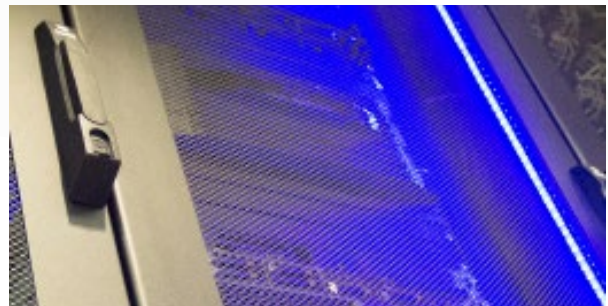
Products



Structured cabling system

The Ram-Telecom solutions are more than 50 options for the configuration of enclosure for the installation of network, telecommunications and server hardware. The presence of such an ergonomic design allows you to effectively place the equipment, for small tasks and/or a large server complex. The enclosure can support up to 1500kg, indeed it is successfully used in data processing centers.

This solution includes components distinguished by high consumer properties, performance and full compatibility with each other. Using the SCS product range, it is possible to organize high performance lines at facilities of any complexity, including those in data centers. SCS formation is carried out using a cable with LSZH sheath, where high level of personnel, equipment and environmental safety are of great importance.



Rack cabinet with air conditioning, anti-fire system and UPS

Solution for Compact Data Center or Disaster Recovery, with integrated cooling system, UPS and anti-fire equipment.

Net One is a smart and reliable solution for the optimization of IT infrastructure installation time.

Dimension:

h2100×1100×1000mm

Enclosure protection: IP55

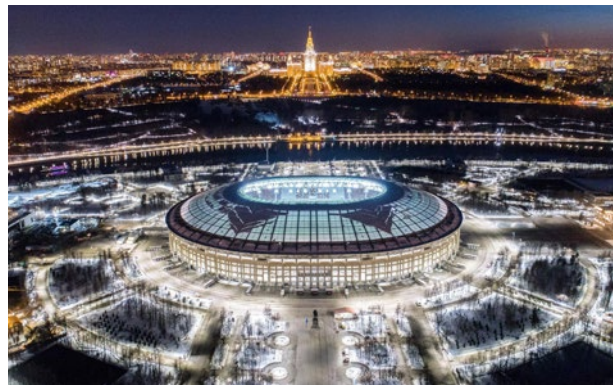
Cooler protection: IP54



References



Kaliningrad Stadium - Arena Baltika, Russia 2017/2018

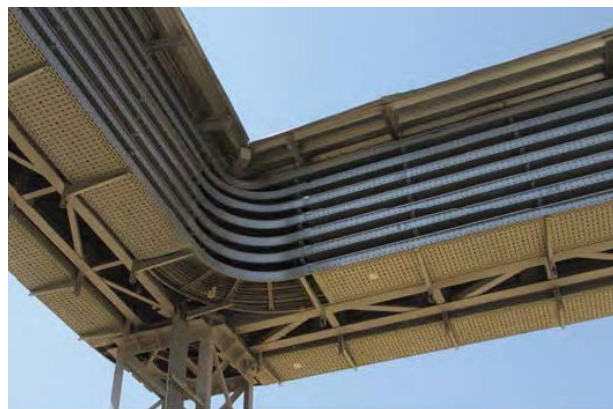


Luzhniki Stadium - Moscow, Russia 2017/2018

All the Russia FIFA World Cup Stadiums contain DKC products



Pynginskoe gas storage - Gazprom, Russia 2015



Gazprom Southern Compressor station - Russkaya and Kazachya, Russia 2015



Messoyakha gas and oil fields - Gazprom Neft, Russia 2016



Lukoil Neftegaz Refinery - Perm, Russia 2014/2015



Mitino Electric Engine House of Moscow Metro - Moscow 2015/2016



Moscow Refinery - Gazprom Neft, Russia 2015



References

BKS

Galliker - Palace/Residential Tower;
Coop Lobos - Logistic, Bakery;
Kunstmuseum, Basel - Museum
- Shopping; Hochhaus Aquila
Pratteln - Apartments and shops;
Riser - Logistic center; Mall of
Switzerland - Commercial Center
Generali - Undertaking; SBB ZAS
Altstetten - Building; Guisin Paltz
- Building; Biozentrum Basel -
University; Guisan Plaz - Exhibition;
Swiss Re - Shopping Roche Pe@k;
Business House, Basel; Business
House, Forlibuckstrasse; Business
House, Limmatspital; Business
House, Hardturmпарк; Business
House, Royal Doner;
Hospital - Switzerland

Belas Shopping

Angola - Central Africa

Boffetti Imp. Srl

c/o Centrale Enel Power
Termini Imerese (PA) - Italy

Braskem

Alagoas - Brazil

Bunge

Pernambuco e Santa Catarina -
Brazil

BUSPOWER

ASR Garment, Textile;
KSB Spinning Mills, Textile -
Bangladesh ST Micro CED, Data
center; Pegasus At Changi Ced,
Data Center - Singapore

Cant. Ati Tozzi Sud/ICC

c/o CTE Enelpower
Tor. Valdaliga, Civitavecchia (RM)
- Italy

Casagrande Elettrocostruzioni

Impianto Corneigliano Laudense -
Chimico - Italy

Ceu Srl

c/o Centrale Enipower
Pavia - Italy

Codelco

Copper mine - Chile

Codemig - Expominas

Belo Horizonte - Brazil

Coelna Imp.

c/o Cant. Enipower
Sannazzaro De' Burgondi (PV)
- Italy

Cons. Italcem

c/o Cant. Con. Power
Torviscosa (UD) - Italy

C.P.C. Srl

c/o Cantiere Edipower
Piacenza - Italy

C.P.C. Srl

c/o Cantiere Enelpower
Ostiglia (MN) - Italy

C.P.C. Srl

c/o Alston Cant. Enelpower
Montanaso Lombardo - Tavazzano
(LO) - Italy

Elettro Impianti Borno

c/o Cant. Enel Power
Montanaso Lombardo (LO) - Italy
Ponti Sul Mincio (MN) - Italy



High speed train - France 2015/2016



Lublin Airport - Poland 2016



Expo 2015 Exhibition - Milan, Italy 2014



Linde Engineering AG. 2015/2016

Emerson

Emerson - Factory production,
France

Enel Russia

Sredneuralskaya GRES

Fábrica da GM

Argentina

Fábrica da HYUNDAI

Anápolis - Brazil

Fiat

Pernambuco e Minas Gerais

Gazprom

South Stream, Russkaya and
Kazachya compressor stations

Gazprom Neft

Messoyakhskoye field
IGEN Engineering CO, LTD
Royal gams Pavillon, Shopping -
Thailand

Lamael

c/o Centrale Termoelettrica
Santa Barbara (AR) - Italy

Lamael c/o Centrale Enel

Termini Imerese (PA) - Italy

LARCE

Codelco (Copper mine); Mall Piedra
Roja (Shopping Center) - Chile

Linde Engineering AG

KuibyhevAzot

Lukoil

Lukoil-Permnefteorgsintez

Mater Olbia

Cabina di Trasformazione -
Hospital - Italy

Metro SP

São Paulo - Brazil

Mosenergo

Moscow - Russia

Moscow Government

Luzhniki Stadium
Palacio do Planato
Brasilia - Brazil

Petrobras (Rnest/Comperj)

Pernambuco e Rio de Janeiro -
Brazil

Petrofac

Sakhalin Island - Russia

Petroquímica de Suape

Pernambuco - Brazil

PhosAgro

ANOF-3 group of buildings

Powertec Electric (S) PTE LTD

Jamuna - Textile, Bangladesh

Procuratoria Geral da Republica

Brasilia - Brazil

Scanelec AS

Hydro Power Station,
Bergen Airport - Norway

Scanelec AS

Landskrona Kraft, Sweden



Kia Motors Plant



Petrofac - Sakhalin Island 2017/2018



Bolshoi Theatre - Moscow, Russia



Pulp mill of Suzano Papel & Celulose
Brazil 2015/2016

References

Shopping

Salvador - Central America

Shopping Cidade Jardim

Sao Paulo - Brazil

Smeic Srl

c/o Cant. Enelpower La Casella
Castel San Giovanni (PC) - Italy

Suzano Papel & Celulose

Maranhao e Bahia - Brazil

Techimp Impianti Srl c/o Enel Power

Ostiglia (MN) - Italy

Tecnimont

Gazprom Amur Gas Processing
Plant in Amursky Region

Telelettra s.n.c.

c/o Cant. Enelpower
Ostiglia (MN) - Italy

Telelettra c/o Conpower / Centrale Edison

Candela (FG) - Italy

Torviscosa (UD) - Italy

The Moscow Metro

Mitino electric engine house

Toshiba

HDVC MON ITA Kotor and
Cepagatti Conversion Station
(Chemical) - Ukraine and Italy

Total

Kharyaga field

Tozzi Sud Spa

c/o CTE Enel Power Costruzione
Priolo Gargallo (SR) - Italy

Tozzi Sud

c/o Termoelettrica Edipower
Piacenza - Italy

VEI Power Distribution

Guardamiglio (LO) - Italy

ZPUE S.A.

Pol-Skone Lublin, Factory
production;
Fiera Bielsko Biala, Exhibition;
TFP Babimost, Factory production;
Stadion Widzew, Sports facility;
Mlyn Stradunnia, Food Factory;
Llot, Public Office;
Porto office B, Public Office;
Browar Szczecin, Food Industry;
Pila Radioterapia, Hospital;
Modniczka, Factory production;
Kokotow 3, Warehouse;
Ujscie, Food Industry;
EC Bialystok, Power Plant;
De Heus Lomza, Food Industry;
Bolsius, Factory production;
Electropoli, Factory production -
Poland



Antipinsky Refinery - 2016



Thermo power plant - Mosenergo, Russia 2015



Tecnimont - Amursky Region 2017/2018



Kharyaga field - Total, 2015

